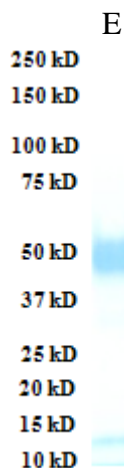


Human Soluble gp130



Product Name	Human Soluble gp130
Catalog No	IT-401-004p
Source	Recombinant protein purified from 293 cell culture
Formulation	Each vial contains 100 µg of purified protein (1 mg/ml) in PBS only.
Protein	C-terminal 6xHis tagged human soluble gp130 protein (a.a.23-329), also named interleukin-6 receptor subunit beta isoform 2 (Genebank Accession No. NP_786943)
Applications	Antibody ELISA, Immunogen, WB standard, etc.
Purity	>95%
Storage	Keep it at 4°C if used within a month. For long term storage, split it into small aliquots and keep at -80°C. <u>Avoid repeated freezing and thawing</u> . The product will be expired one year after receiving if stored properly. Non-hazardous. No MSDS required.
Use Limitation	For research use only, not for use in diagnostic procedures.



E: Human Soluble gp130